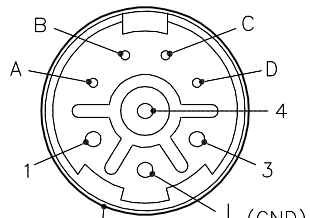


# MALE END VIEW



GROUND AND  
SHIELD  
CONNECTED  
TO HOUSING

- 1 = BLUE
- 2 = GREEN/YELLOW
- 3 = WHITE
- 4 = BLACK
- A = ORANGE
- B = RED
- C = WHITE/BLACK
- D = RED/BLACK

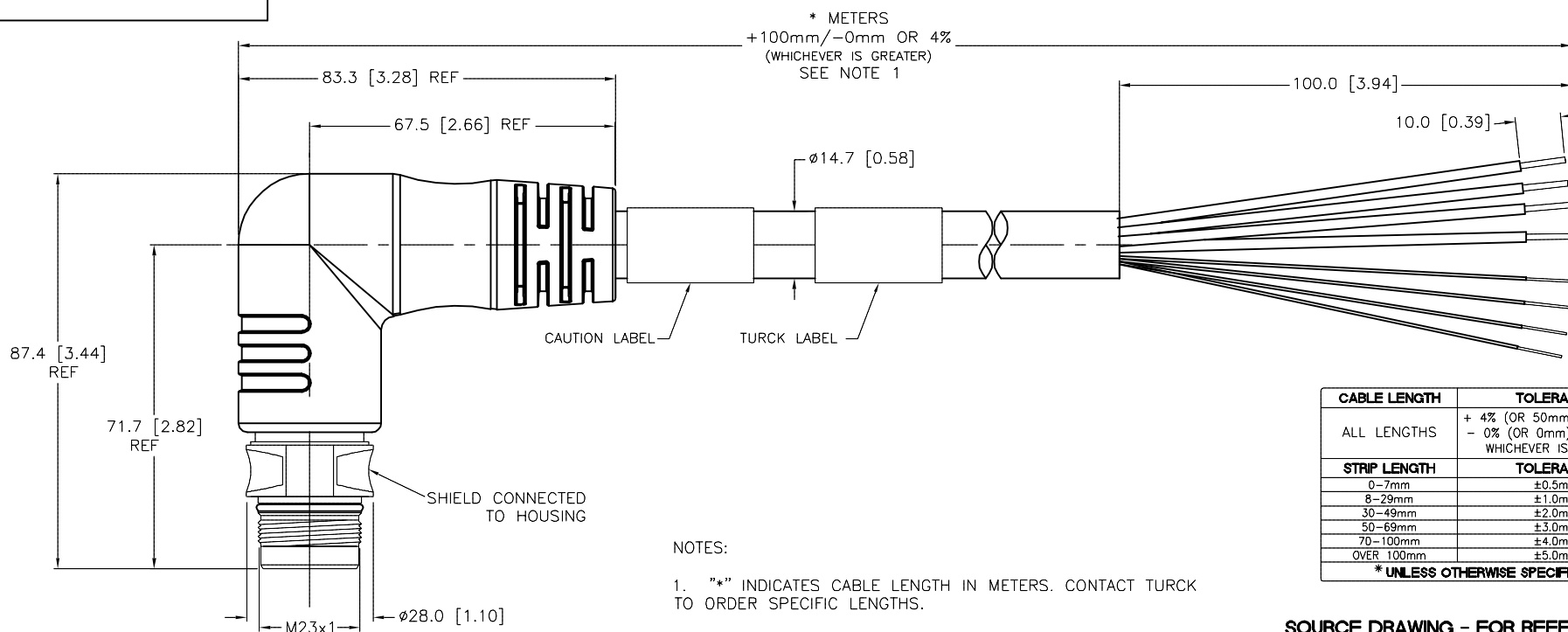


## CAUTION:

RISK OF ELECTRICAL SHOCK  
DO NOT DISCONNECT UNDER LOAD

# SPECIFICATIONS

|                                   |                                  |
|-----------------------------------|----------------------------------|
| CONTACT CARRIER MATERIAL/COLOR    | NYLON/GRAY                       |
| MOLDED HEAD MATERIAL/COLOR        | TPU/BLACK                        |
| CONTACT MATERIAL/PLATING          | BRASS/GOLD                       |
| COUPLING NUT MATERIAL/PLATING     | BRASS/NICKEL                     |
| MANUFACTURER RATED CURRENT [A]    | 22 (PINS 1-4), 7 (PINS A-D)      |
| UL RATED CURRENT [A]              | 14 (PINS 1-4), 5 (PINS A-D)      |
| RATED VOLTAGE [V]                 | 600 V (1-4), 300 V (A-D)         |
| OUTER CABLE JACKET MATERIAL/COLOR | TPE/YELLOW                       |
| CONDUCTOR INSULATION MATERIAL     | PVC                              |
| NUMBER OF CONDUCTORS [AWG]        | 4x12 AWG; 4x18 AWG               |
| SHIELD                            | POLYESTER FOIL/TC BRAIDED 65%    |
| TEMPERATURE RANGE                 | -40°C to +90°C (-40°F to +194°F) |
| PROTECTION CLASS                  | MEETS IEC IP67                   |

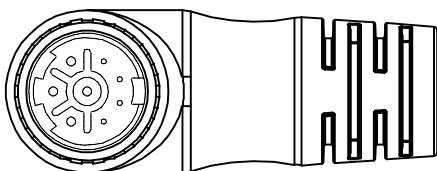


| CABLE LENGTH                 | TOLERANCE*  |
|------------------------------|---|
| ALL LENGTHS                  | + 4% (OR 50mm) OF LENGTH<br>- 0% (OR 0mm) OF LENGTH<br>WHICHEVER IS GREATER |
| STRIP LENGTH                 | TOLERANCE*  |
| 0-7mm                        | ±0.5mm  |
| 8-29mm                       | ±1.0mm  |
| 30-49mm                      | ±2.0mm  |
| 50-69mm                      | ±3.0mm  |
| 70-100mm                     | ±4.0mm  |
| OVER 100mm                   | ±5.0mm  |
| * UNLESS OTHERWISE SPECIFIED |   |

## NOTES:

- "\*" INDICATES CABLE LENGTH IN METERS. CONTACT TURCK TO ORDER SPECIFIC LENGTHS.

SOURCE DRAWING - FOR REFERENCE ONLY



|                      |  |   |  |  |  |  |  |
|----------------------|--|---|--|--|--|--|--|
| RELATED DOCUMENTS    |  | 3RD ANGLE PROJECTION  |  | <div>THIS DRAWING IS CONFIDENTIAL AND THE PROPERTY OF TURCK INC. USE OF THIS DOCUMENT WITHOUT WRITTEN PERMISSION IS PROHIBITED.</div> <div>TURCK</div> |  | <div>3000 CAMPUS DRIVE<br/>MINNEAPOLIS, MN 55441<br/>1-800-544-7769<br/>(763) 553-7300<br/>(763) 553-0708 fax<br/>www.turck.us</div> |  |
| 1.<br>2.<br>3.<br>4. |  |   |  |  |  |  |  |
| MATERIAL             |  | DRFT PJ   |  | DATE 04/20/07  |  | DESCRIPTION<br><br>CSSWMS 822-288-*  |  |
| SEE SPECIFICATIONS   |  | APVD  |  | SCALE 1=1.5  |  |  |  |
| FINISH               |  | UNIT OF MEASUREMENT<br><br>MILLIMETER [ INCH ]<br><br>DO NOT SCALE THIS DRAWING |  | IDENTIFICATION NO.   |  | REV  |  |
| SEE SPECIFICATIONS   |  |   |  |  |  | N  |  |
|                      |  |   |  |  |  | FILE: 777016823  |  |
|                      |  |   |  | SHEET 1 OF 1   |  |  |  |

|     |                       |    |          |          |
|-----|-----------------------|----|----------|----------|
| N   | UPDATE RATED CURRENTS | NF | 11/21/19 | 75424    |
| REV | DESCRIPTION           | BY | DATE     | ECO. NO. |